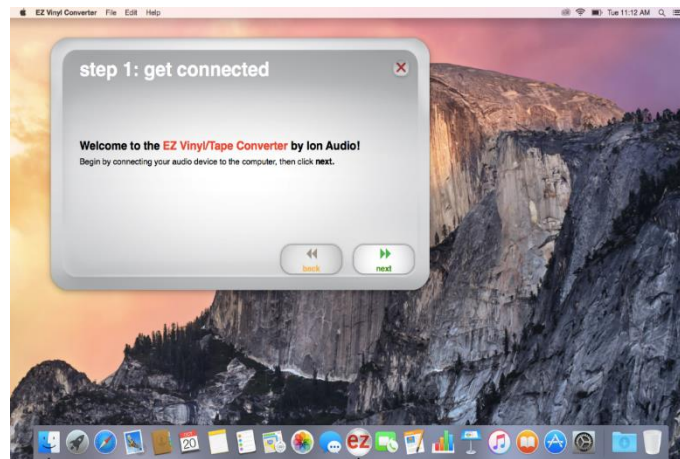


Tape2PC Instructions

1. Press the Power button on the Tape2PC deck. Insert the tape you wish to digitize into Deck A. Press the Pause button on Deck A, and then press the Play button on Deck A. Your tape should now be queued up. If you aren't sure at which point you wish to begin the recording, you'll need to listen to the tape through a computer. This can only be done by using the software.
2. Open up the EZ Vinyl/Tape Converter software on the Mac. Once the software opens, plug one end of the supplied USB cord into the cassette deck (the port is on the back of machine) and the other end into the Mac. Click "Next" on the software screen. Numbered Instructions with a short description



3. If you aren't sure where to begin your recording, press the Pause button under Deck A. The tape will begin playing, with sound coming from the computer. On the EZ Converter software screen, you should see the bars moving to show the audio from the tape. You can control the Gain on this screen by moving the slider bar, or you can control it by turning the Gain knob on the back of the cassette deck. Rewind or fast forward your tape to the point at which you want the recording to begin, and press the Pause button on the deck again.



4. If your tape has multiple tracks on it, the EZ Converter software can break these tracks up into separate audio files. To do this, make sure the “Automatically split into tracks” option is checked on the EZ Converter software screen. Uncheck this box to separate tracks manually. Once you’re ready to record, hit the record button on the EZ converter software. Then press the Pause button on the tape deck. Your tape should begin to play at this point.



5. If you haven't selected the “Automatically split into tracks” option, you will see a “New Track” button on the software screen as the recording continues. When you get to the end of a track, press the “New Track” button to begin a new audio file. Numbered Instructions with a short description
6. When you are finished your recording, press the Stop button on the cassette deck. Click “Next” on the software screen to add the artist and song information. If you did not choose the option to automatically split the tracks, you will be prompted to add information for each song. For more than 10 tracks, click the “Next” button to enter more track information. Once you have named your tracks, click “Next” in the software. At this point your music will be exported to iTunes where it will appear as a new album. Once the export is completed, you will be asked if you wish to record another track. Click “Yes” and then “Next” to go back to the beginning of the recording process, or click “No” and then “Next” to exit the software.



Settings on the front of the cassette deck

- PLAY Cr02: use this for cassettes labelled "Cr02". Most cassettes will not require this option.
- DUBBING: this will dub from one cassette to another cassette.
- HI.SP.DUB: this will increase the speed at which the dub occurs, with some loss of quality
- REC Cr02: use this when dubbing to a Cr02 tape
- NOISE REDUCTION: this eliminates some of the hiss when recording from tape
- REC LEVEL: this knob will control the recording level when an external device is being recorded to Deck B. This does not affect recording to a computer or dubbing from one cassette to another

Controls on the back of the cassette deck

- USB Input: plug the USB cable into this port
- Gain knob: use this to maximize the audio while minimizing the amount of noise being transferred over. Use the display on the front of the deck to watch the recording. Play a tape and watch the bars move from green to red. Using the gain control, try to keep the bars from going into the red
- REC INPUT: connect an external device to these ports using RCA cables. This will record an external device to Deck B only
- PLAY OUTPUT: combines the audio from both decks. Connect RCA cables from these ports to a stereo to listen to your tapes

Remember that you will only be able to hear the sound from the cassette deck on your computer by using the EZ Converter software.

To dub from tape to tape, insert the playback tape into Deck A. Insert the tape you are recording to into Deck B. Press the "Dubbing" button on the machine. If you want to record in high speed mode, press the "HI.SP.DUB" button on the machine. This will shorten the time required to record but with a loss of quality. Press the "Pause" button and then the "Play" button, both on Deck A. Press the "Record" button on Deck B, then press the "Pause" button on Deck A to start the recording. When finished, press the "Stop" button on Deck B.