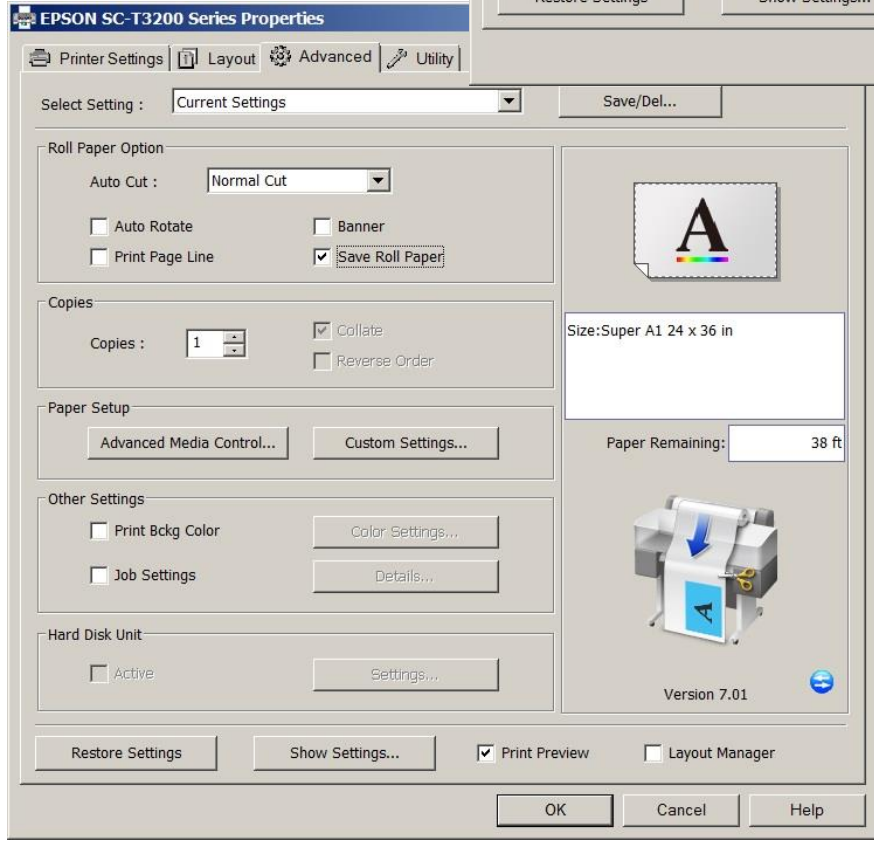
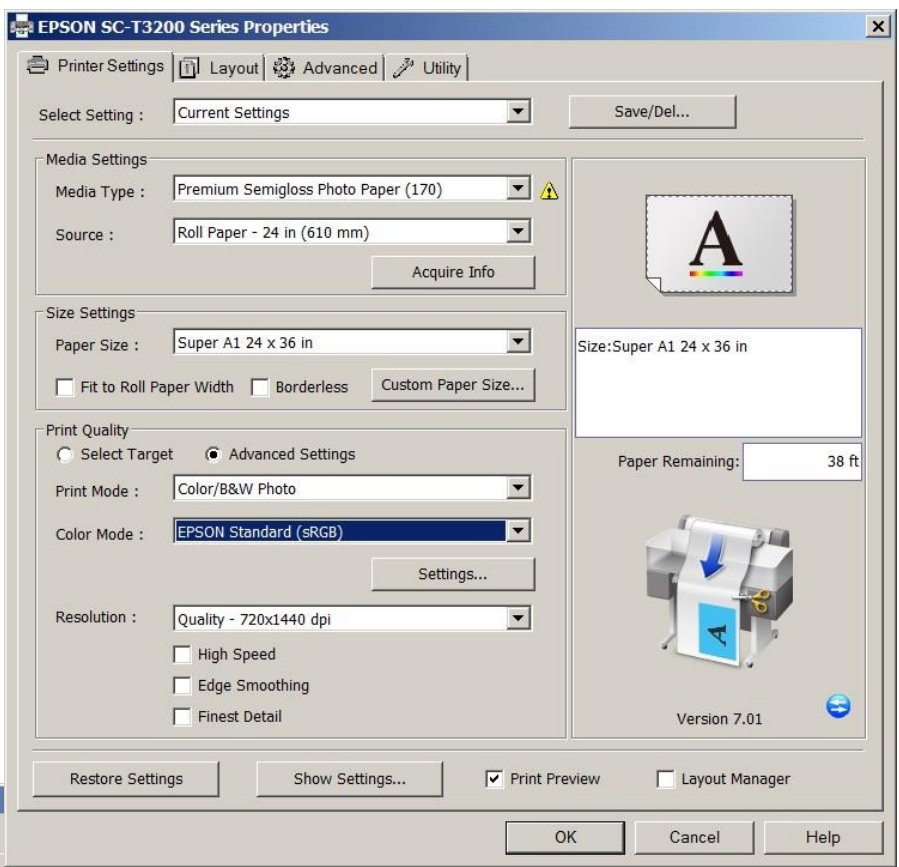


EPSON Large Format Printer – Steps for [Printing an Image at a Specific Size](#)

Please note that the image file should be prepared, prior to following these steps, to the specific print dimensions you want. Follow the instructions for resizing an image in Paint.net if you still need to do this.

1. OPEN YOUR IMAGE – Right-click the file, select “Open With,” then select “**Paint**” (not Paint.net)
2. SCALE YOUR IMAGE – Open the application menu (next to “Home” in the ribbon), hover over “Print,” and click “**Page Setup**”
 - Paper Size should be set to **Super A1**
 - Source should be set to **Roll Paper**
 - **Scaling: Adjust to 100%**
 - Orientation: Set to whichever setting saves more paper.
 - Click OK
3. SET UP YOUR QUALITY OPTIONS – Open the application menu again, and click “**Print**,” then open “**Preferences**”
 - Adjust “Print Quality” on the **Printer Settings** tab.
 - Set **Colour Mode** to “Epson Standard (sRGB)” for the most vibrant colours.
 - In **Resolution**, “Max Quality” will look best, but also uses the most ink.
 - Under the “Advanced” tab, make sure that “**Save Roll Paper**” is checked – THIS IS VERY IMPORTANT – if not done, the print job will be followed by a bunch of extra wasted blank paper
 - Make sure the “Print Preview” box is checked as well. This will provide one final opportunity to verify that the scaling of the image looks as expected.
4. See the reverse of this page for screen captures of the settings as described here.
5. Click **Print** to complete the print job. Wait a couple of seconds for the print preview to appear (may be flashing on the taskbar), at which point you can check that the size looks okay before clicking print at the top of this new window. The image should be printed at the exact native dimensions of the file.

Printer Settings Tab



Advanced Tab