

Clue Set Six

Begin at the place of the Victorian Dynamo.

	A	B	C	D	E	F	
Latitude Offset	/ / /						= 26
	G	H	I	J	K	L	
Longitude Offset							= 28

Clue #1

For 30 years my walls of glass surveyed a park Victorious.
The expositions held within extolled our bounty glorious.
Heir to a crown, my stone he laid.
Though the hand of Time he could not stay.



Place the year of my building, plus 6 in G, I, E and F.

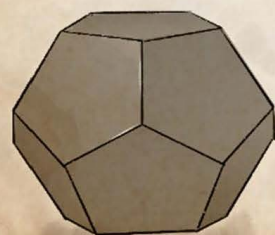
Clue #2

تَعْرُجُ الْمَلَائِكَةُ وَالرُّوحُ إِلَيْهِ فِي يَوْمٍ كَانَ مِقْدَارُهُ خَمْسِينَ أَلْفَ سَنَةٍ

A passage in a sacred book measures a day in years.
A passageway for angels, beyond this vale of tears.

To the 3 digit chapter and verse add 21 and place in C, D and K.

Clue #3



The number of vertices on a dodecahedron.
Add 37.

Place the two digits in B and J.

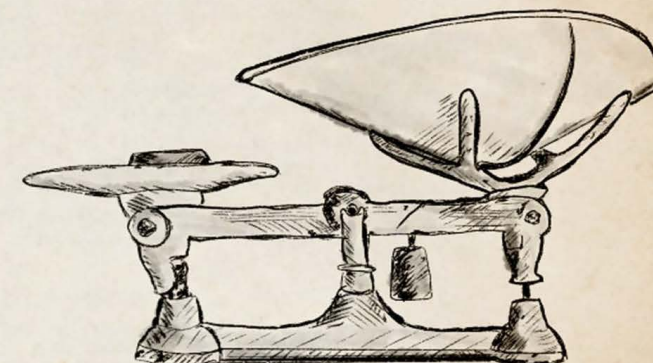


Clue #4

I am a doctor's office uprooted from my land,
and now preserved, my purpose served,
In a Valley Town I stand.

Take the year I was built
and subtract 1796.

Place the number in H and L.



Reader, use the offsets you've uncovered to take you to a new destination. I ask you do that by **subtracting** the latitude offset from the place of the dynamo. Next, **add** the longitude to that of the same location.

You will find yourself, as I did, at a place of ascension. Use the mammal and insect names of the four-winged wonder there to solve this cipher:

SHRTSKFAGJUFIRPKMLKDKJAUF

The answer will place in your hands the last two digits that will guide you to my nautilus gears' place of concealment.

The Endgame

Congratulations. You now have 12 digits (two from each clue set). Place the first and second digits from each clue in the indicated spaces below. At this location have I placed my nautilus gears. Your quest is at an end. Rest well.

43.	5-1	6-1	5-2	1-2	2-1	4-1
-79.	3-1	2-2	3-2	1-1	4-2	6-2

Clue Set Five

Begin at the place of the hero.

	A	B	C	D	E	F	
Latitude Offset	/						= 23
	G	H	I	J	K	L	
Longitude Offset							= 22

Clue #1

22 brothers and sisters have I,
a choir of metal in a tower of song.
The largest of all, to the faithful I call
My carapace standing near a century long.

Take my 7-letter name, remove the vowels,
then add the numeric values of the remaining
letters' location in the alphabet, less 10.

Place the two digits in B and I.



Clue #2

A	A	B	C	26
B	B	C	D	18
B	A	C	D	20
C	C	D	D	12
24	26	16	?	

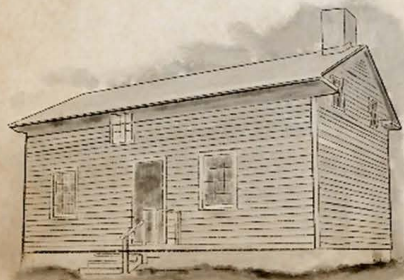
Each letter in the grid to the left represents a number. Each row and column, save one, is totalled for you. Please determine the missing two-digit sum.

Place the answer in G and H.

Clue #3

An escaped slave owned me, as did his generations
My walls still echo the word: emancipation!
Take the year the home was bought subtract from it
the year of the Northwest Ordinance.

Place the two digits in L and C.



Clue #4



Though often made of gold,
and shared with a betrothed,
I am the stuff of dying stars
and in a harp unfold.

Place my number in E and D.

Clue #5

The only branch of a mighty tree that bears a family name.
An inn that served Niagara's trade, likewise wore the same.
And now within my modern walls carved figures mark a time
when illness and a wish for home created art sublime.

Find the first date to the right of the vitrine, subtract 1616.

Place the answer in F, J and K.



Reader, use the offsets you've uncovered to take you to a new
destination. I ask you do that by subtracting them from the
coordinates of the place of the hero.

You will find yourself, as I did, near the story of a Victorian dynamo.
Use the three words of the name to decode this cipher:

QTLESPQQWKGHIIHQPKBQTLWSOBKUITQTLOLQHFLLPQWK

The answer will place in your hands two digits that will
guide you to my nautilus gears' place of concealment.
Onward!



Clue Set Four

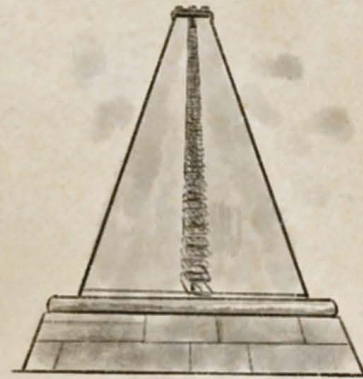
Begin at the place of the manufacturing.

	A	B	C	D	E	F	
Latitude Offset	///						= 17
	G	H	I	J	K	L	
Longitude Offset	///						= 32

Clue #1

The number of letters Blair McFarlane scratched into the wall beside his father's pumphouse desk.

Place the digit in L.



Clue #2



In a local archives I count the hours, a United Kingdom adorns my face. A harp, a ram, a courting couple, a crown of feathers all take their place. Count the number of harp strings and add to them the two digits directly below my centre, then multiply by two.

Place the resulting two digits in D and H.

भगवद्गीता

Clue #3

A prince and his loyal charioteer discussing war and duty. eighth avatar of Vishnu, cerulean in his beauty.



Take the last four letters (in their romanized version) of the name of this sacred text and convert them to the numeric value of their place in the alphabet. Add them, then subtract 8.

Place the two digits in I and J.

Clue #4



I am a reflection of my true worth, two centuries past when Wollstonecraft's daughter birthed her monster.

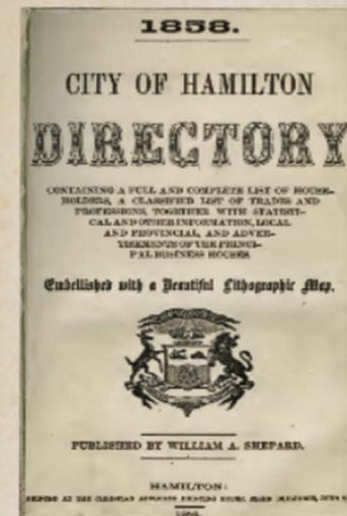
Place the four digits in B, C, E and F.



Clue #5

The number of the page in the 1858 Shepard's City of Hamilton Directory that first mentions: "Crockery, China and Glass ware Dealers".

Place the answer in K.



Reader, use the offsets you've uncovered to take you to a new destination. I ask you do that by subtracting them from the coordinates of the place of manufacturing.

You will find yourself, as I did, where once a hotel commanded a stunning vista. Use the five words of the fourth line on the fountain for a fallen hero to decode this cipher:

JQITSKBMDQTJEJNRKSUQGTGYDKQR

The answer will place in your hands two digits that will guide you to my nautilus gears' place of concealment. Onward!



Clue Set Three

Begin at the place of the power.

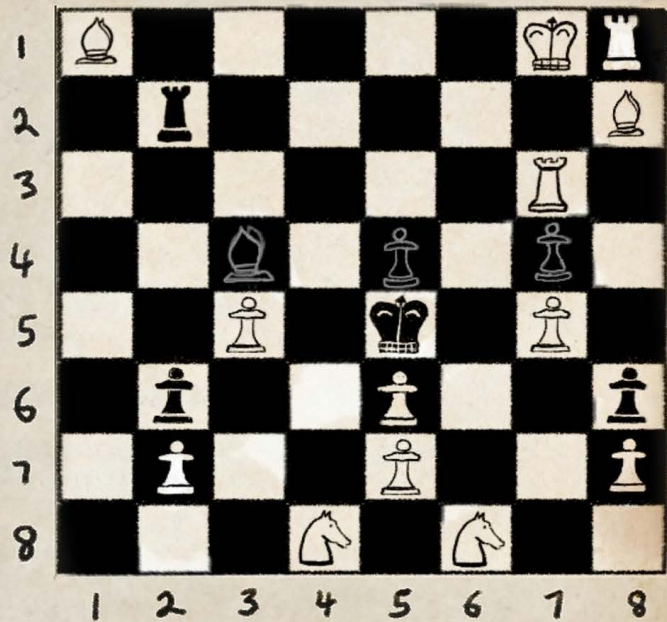
	A	B	C	D	E	F	
Latitude Offset	///	///					=14
	G	H	I	J	K	L	
Longitude Offset							=24

Clue #1

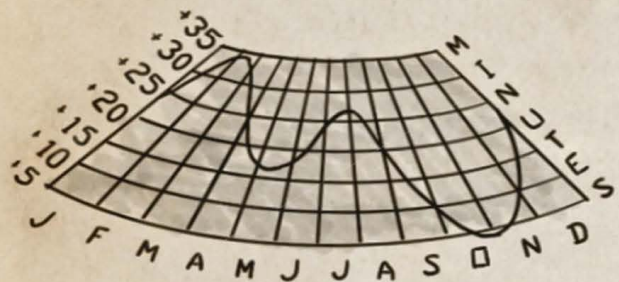
Find the only move for white that will not result in the immediate checkmate of the black King. Note the space the piece would move into as (x,y).

$$z = (x)^y \times y$$

Place the digits z in H and E.

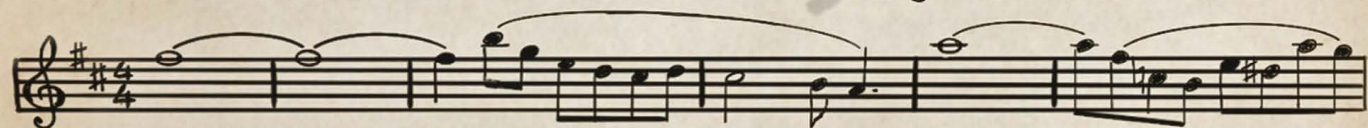


Clue #2



My gnomon lets bright Helios cast the time
 A displacing Greek and Priestley teach nearby.
 A scholar's road doth my north border frame
 with a garden for a student named.
 Subtract the last digit of my latitude encribed
 from the last two digits of my longitude,
 likewise described.

Place the two digits in C and F.



Clue #3

The August arrangement of this melody contains a letter. Find its numeric spot in the alphabet. Add 9.

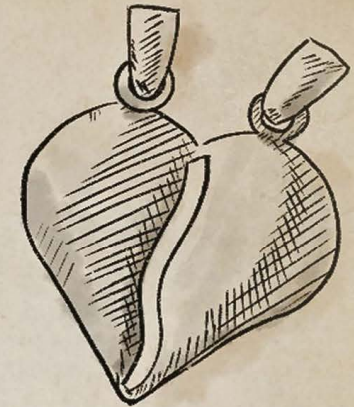
Place the two digits in G and I.

Clue #4

Of the amicable numbers, we are the smallest, and I the lesser twin.

Take my first two digits, and your solution win.

Place the answer in J and L.



Clue #5

I stand by Plains, ringed by death and gardens.
 I Herald a Bay-bound race o'er a century run.
 A nautilus spiral marks the ground beside me.
 And marked me too, all those whose race is done.
 Add 35 to the number cut into me.

Place the answer in K and D.

Reader, use the offsets you've uncovered to take you to a new destination. I ask you do that by adding them to the coordinates of the place of power.

You will find yourself, as I did, near a history plaque that speaks of manufacturing. Use the six-letter word in the company's name and combine it with the last name of the owner of the firm that on this spot cast McFarlane's engine. Use the words to decode this cipher:

VLYDNPCKXCSDPMVTVBGEFZYD

The answer will place in your hands two digits that will guide you to my nautilus gears' place of concealment.
 Onward!

Clue Set Two

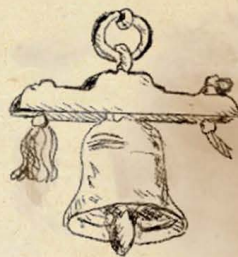
Begin at the place of the standing stone.

	A	B	C	D	E	F	
Latitude Offset	///						=21
	G	H	I	J	K	L	
Longitude Offset							=12

Clue #1

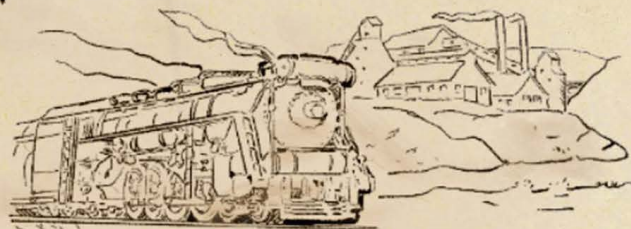
16			13
	10	○	8
	15		

A touch of melencolia may help those who seek to fill the circle of this magic square.



Place the digits of the answer in H and E.

Clue #2



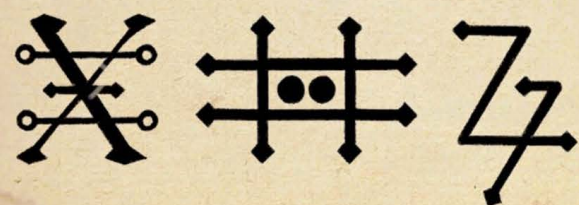
Below these numerals came the masses, their journeys just beginning. From strife and harm, with babes in arms, more sinned against than sinning. Convert the Roman characters to digits.

Place the last two digits in C and L.



Clue #3

Sum the atomic numbers of these three elements.



Place the answer in B, K and G.

Clue #4

A mosaic of white in a half-wrought circle
I speak of birth and restoration
A checkered edge and rosettes two
at a meeting of streets on a Block renewed.

Subtract the lesser from the greater of the dates here, then remove the number of Mary B. McQuesten's children in 1890, then subtract another two.

Place the answer in D and F.



Clue #5

The number of the sonnet that contains the line:
"And Time that gave, doth now his gift confound."

Place the answer in I and J.

Reader, use the offsets you've uncovered to take you to a new destination. I ask you do that by subtracting them from the coordinates of the standing stones.

You will find yourself, as I did, near a plaque, fourth from the left or right of seven. Use the three English words beneath 1859 to reveal the meaning of this cipher.

UGLBLQTSCHACLELESNCJLEGNTKQCLED CUSK

The answer will place in your hands two digits that will guide you to my nautilus gears' place of concealment. Onward!



Clue Set One

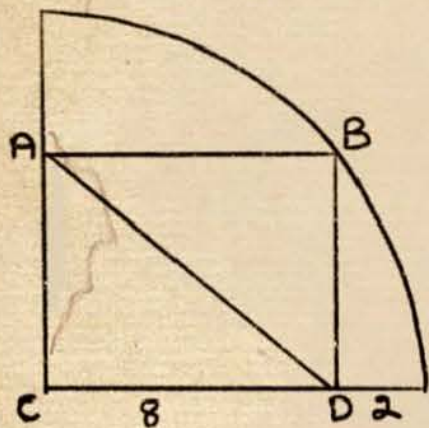
Begin at my home in downtown Hamilton:
43.258915, -79.865911

	A	B	C	D	E	F	
Latitude Offset	///						= 13
	G	H	I	J	K	L	
Longitude Offset	///						= 5

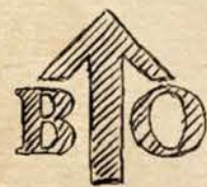
Clue #1

In the diagram below, calculate the length of the diagonal AD.

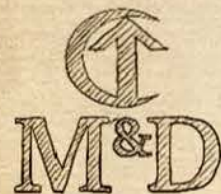
Place the digits in J and L.



Clue #3



The Heights of Burlington in Hamilton abide.
War's bitter cost, a garden lost with Paradise close by.
Raised on copper, resting on stone, I speak of loss and illness.
These symbols share my verdant space and weather
time with stillness.



Take my last two digits and from them subtract two.
The outcome yields a fragment of the answer you pursue.

Place the answer in H and F.

Clue #2

The sixth prime number plus the lines
in a villanelle.

Place the answer in E and I.

Clue #4

The number of pillars on the front of Laird A.N.M's
mansion.

Place the answer in B and D.

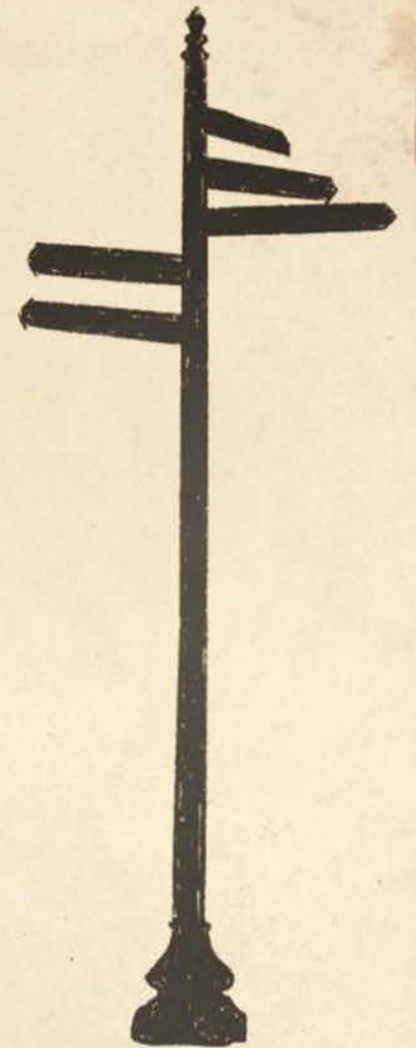


Place the answer in C and K.



Clue #5

The number of roosts
in the dovecote near
where Sophia once lived,
minus the sum of the
square of the first
three prime numbers.



Reader, use the offsets you've uncovered to take you to a new des-
tination. I ask you do that by adding them to the coordinates of my
abode.

You will find yourself, as I did, near a standing stone of sea and
land. Use its fifth line to reveal the meaning of this cipher:

PAMFCHQDPHEFOFNMKLSHZMD

The answer will place in your hands two digits that will
guide you to my nautilus gears' place of concealment.
Onward!

